

Howard Health Partnership Strategic Framework

Mission
To deliver an effective, community-based and financially sustainable model of care that improves health, achieves cost savings and offers an enhanced patient experience for our target population.

Target Population

Howard County Resident	At least 18 years old
Insurance coverage through Medicare or dually eligible for Medicare and Medicaid	Two or more hospital encounters* in the past year at Howard County General Hospital.

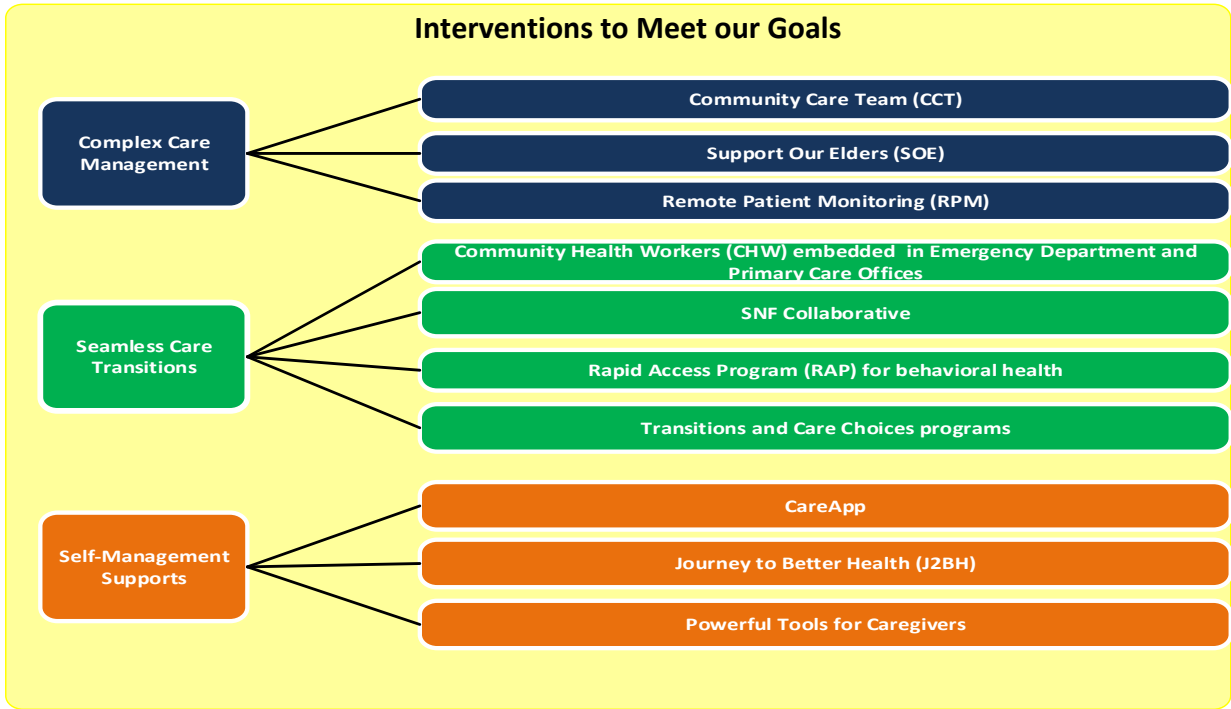
*Encounter = inpatient admission, observation stay or Emergency Department visit

Overarching Goals

- ↑ Experience of Care
- ↑ Health Outcomes
- ↓ Health Care Costs

Main Outcomes

- Improve the patient experience
- Reduce readmissions
Reduce potentially avoidable utilization (PAU)
Improve care coordination
- Reduce total cost of care
Generate financial savings to payers and to reinvest in the Partnership



Contact Information

Tracy Novak, MHS, Director of Population Health Programs, tnovak2@jhmi.edu; 410-720-8762
 Esther Duvall, Population Health Project Manager, eduvall3@jhmi.edu; 410-720-8794